

K-Othrine® WG250

A small pack with a big punch



- Minimal operator exposure
- Up to 12 weeks control
- Control of fleas, bed bugs etc.
- Can be applied to mattresses

Reduces operator exposure

K-Othrine® WG 250 is a water dispersible broad spectrum insecticide with long term residual activity. This deltamethrin concentrated formulation is not classified in its toxicity by the European Community and has a low mammalian toxicity.

The novel 2.5 gram packaging ensures that any operator exposure is vastly reduced, while allowing great flexibility where the product can be applied (see areas of use).

The K-Othrine® WG 250 convenient granular formulation is quick and easy to use while the convenient small pack requires little space for storage. The sachet presentation ensures accurate measurement and eliminates the risk of overdosing while reducing disposal costs.

Up to 12 weeks control

K-Othrine® WG 250 has the new recommendation to add one sachet into 2.5 litres of water for up to 12 weeks control on non-porous surfaces, which is essential in the treatment of bad infestations for fleas and bed bugs.

Can be applied to mattresses

K-Othrine® WG 250 can be sprayed in domestic premises, hotels, onto carpets, wall paper, furniture, bed frames and mattresses (but not clothing, sheets or pillow cases or in cots).



Areas of Use

Domestic premises:

In and around buildings including houses, blocks of flats etc.

Public Buildings:

Continuously occupied areas (as band/spot or crack and crevice treatment only), hospitals, hotels, public baths, municipal buildings, churches, halls, community centres, cinemas etc.

Food Handling:

Processing, food manufacture, kitchens, slaughter houses etc.

Storage:

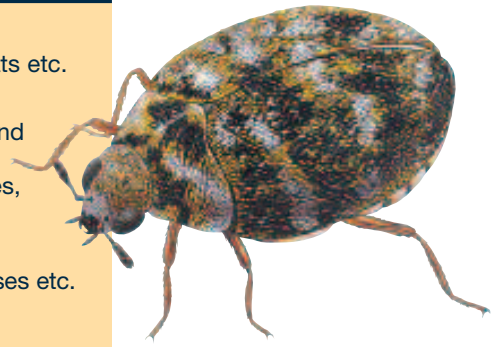
Food retailers, warehouses, raw material stores etc.

Food Preparation:

Restaurants, commercial kitchens etc.

Aircraft:

K-Othrine® WG 250 is certified for Aerospace Materials Specification 1450A for uses in aircraft.



Insects Controlled



K-Othrine® WG 250 is suitable for the control, by surface spray and residual activity, of a wide range of Public Hygiene insect pests including:

Crawling Insects including black ants, bed-bugs, fleas, earwigs, carpet beetles, cockroaches and booklice. It will also control spiders and woodlice.

Flying insects when at rest including flies and mosquitoes.

Health and Safety



Health and safety equipment.

Application Rate

Insects	Conditions	Dilution rate	App. rate
		K-Othrine WG250 Water	
Crawling insects Public health insects e.g. bed bugs, fleas, ants, cockroaches.	Chronic infestations where re-invasion is likely and long residual control is necessary	5.0g 5 L	5 L/100m ²
Stored product insects	Clean up treatment of isolated infestations	2.5g 5 L	5 L/100m ²
Flying insects e.g. flies, mosquitoes & moths		2.5g 5 L	5 L/100m ²

Application: The granules disperse within one minute. Apply to just short of run-off on most surfaces, at a rate of 5 litres/100 m² of surface. K-Othrine® WG 250 is non-staining, non-tainting, virtually odourless and biodegradable.

USE BIOCIDES SAFELY

ALWAYS READ THE LABEL AND PRODUCT INFORMATION BEFORE USE

K-Othrine® WG 250 contains deltamethrin 250 g/kg. K-Othrine® is a registered trademark of Bayer. HSE 8092. PCS 94096.

© Copyright of Bayer 2007 – All rights reserved.

This product guide is not to be construed a legally binding document. Specifications of the products and representations and warranties shall be exclusively dealt with in the distribution and/or sales contracts.

MSDS and label text information is available for download at www.pestcontrol-expert.com